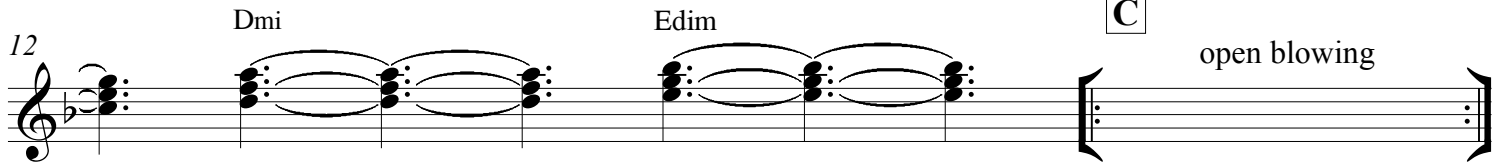
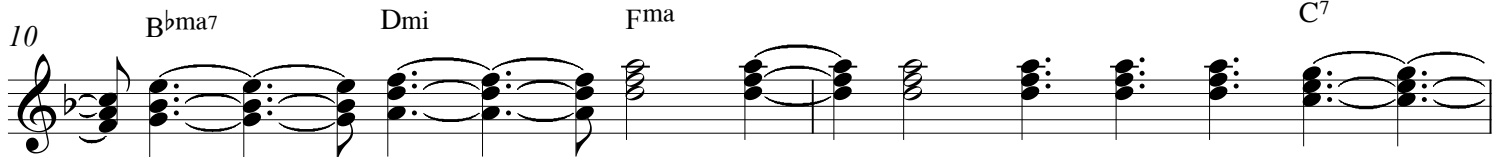
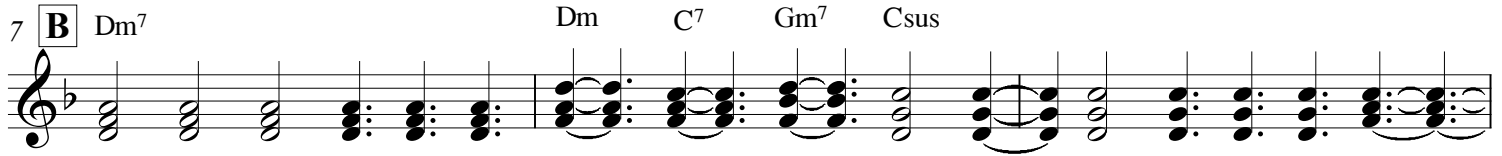
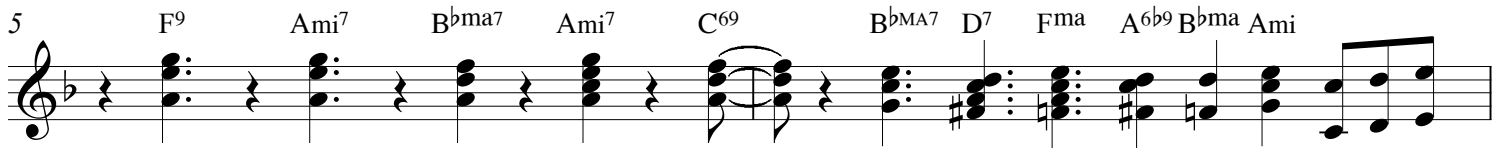
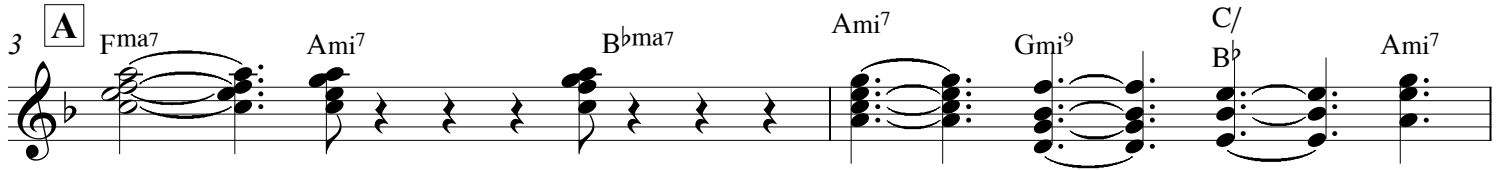
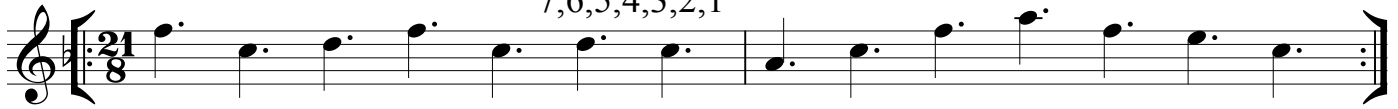


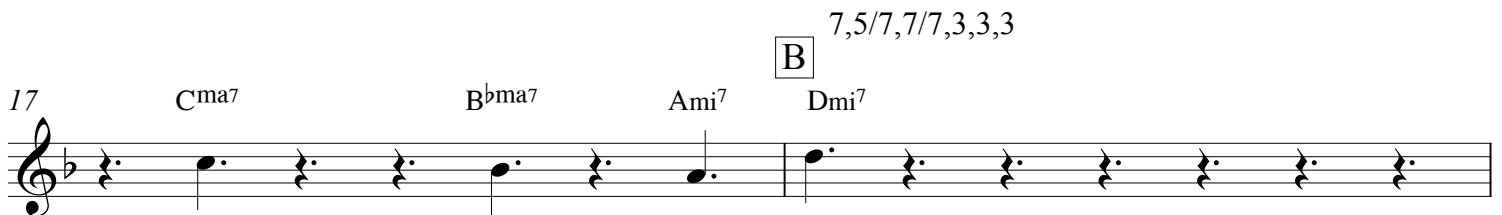
Head In: AABA  
Solos: AAB  
Head Out: ABC

# Kaju Fenny

7,6,5,4,3,2,1



**Solos** **A** 7,6,5,4,3,2,1



2

19 Dmi Csus B<sup>b</sup>ma7 Fma7

A musical staff in treble clef with a key signature of one flat (Bb). It contains three measures of music. Measure 19 starts with a D4 quarter note, followed by a dotted quarter note, and then eighth notes. Measure 20 contains eighth notes. Measure 21 contains eighth notes and ends with a half note.

22 C<sup>7</sup> Dmi Edim

A musical staff in treble clef with a key signature of one flat (Bb). It contains three measures of music. Measure 22 starts with a C4 quarter note, followed by a dotted quarter note, and then eighth notes. Measure 23 contains eighth notes. Measure 24 contains eighth notes and ends with a double bar line.