

Tisra Misra

C.Andrews(2006)

A

Musical notation for section A, measures 1-7. The key signature is two flats (B-flat and E-flat), and the time signature is 7/4. Measure 1 has a Cm¹³ chord. Measure 2 has a 3-measure triplet. Measure 3 has a Cm¹³ chord. Measure 4 has a 3-measure triplet. Measure 5 has a Dm¹³ chord. Measure 6 has an Eb^{m7} chord. Measure 7 has an Eb^{m7} chord. The notation includes eighth notes, quarter notes, and rests.

A'

Musical notation for section A', measures 8-13. The key signature is two flats (B-flat and E-flat), and the time signature is 7/4. Measure 8 has a Cm¹³ chord. Measure 9 has a 3-measure triplet. Measure 10 has a Dm¹³ chord. Measure 11 has an Eb^{m7} chord. Measure 12 has an Eb^{m7} chord. Measure 13 has an Eb^{m7} chord. The notation includes eighth notes, quarter notes, and rests.

B

Musical notation for section B, measures 14-20. The key signature is two flats (B-flat and E-flat), and the time signature is 7/4. Measure 14 has a Gm¹³ chord. Measure 15 has a Gm¹³ chord. Measure 16 has a Gm¹³ chord. Measure 17 has a Gm¹³ chord. Measure 18 has an A^bdim7/ chord and an A chord. Measure 19 has an F[#]aug7/ chord and a B chord. Measure 20 has an A chord. The notation includes eighth notes, quarter notes, and rests.

2

22 Cm⁷ Dm⁷

24 Em⁷ Cm⁷

Solos

27 Cm¹³ Dm¹³ E^bm⁷

A

31 Dm⁷ E^bm⁷ Fm⁷ Gm⁷ Gm⁷ Am⁷

34 Gm¹³ A^bdim⁷/A F[#]aug⁷/B

B

Transiton Korvai

40

Head Out

43 Cm¹³ Cm¹³

A

45 Dm¹³ E^bm⁷

47 Dm⁷ E^bm⁷ E^bm⁷

50 Gm¹³ Gm¹³

B

52 Gm¹³ Gm¹³

54 A^bdim7/ A A F[#]aug7/ B

56

58 *Ending Korvai*

60

62

64

66

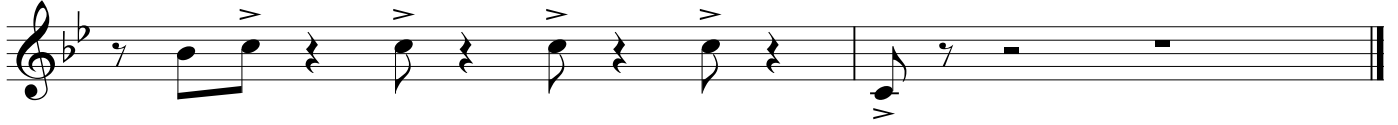
68

70

72



74



Head In: AAA'B...Solos:AAB + Transition KorvaiHead Out: AB + Final Koravi

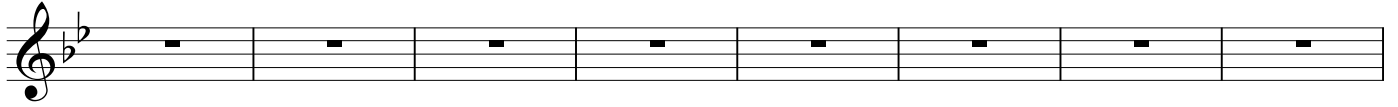
76



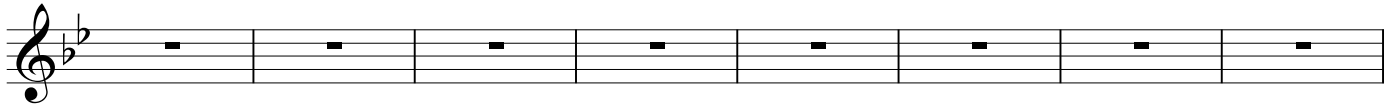
80



82



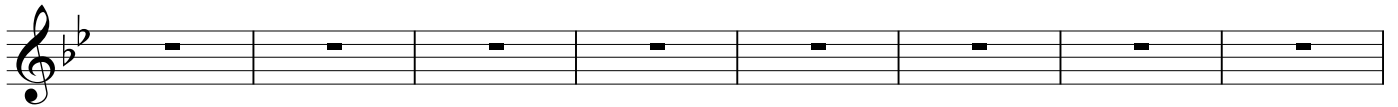
90



98



106



114

