

♩ = 220

Tisra Misra

A

Section A consists of seven measures of music in 7/4 time. The key signature has five flats (B-flat major/C minor). The notation includes eighth and sixteenth notes, with triplet markings over groups of three notes. Chord symbols are placed above the staff: E^bm¹³ (measures 1-2), Fm¹³ (measure 3), G^bm⁷ (measures 4-5), and G^bm⁷ (measures 6-7). Measure 7 ends with a double bar line and a 7/4 time signature.

A'

Section A' consists of six measures of music in 7/4 time. The notation includes eighth and sixteenth notes, with triplet markings. Chord symbols are placed above the staff: E^bm¹³ (measures 8-9), Fm¹³ (measure 10), G^bm⁷ (measures 11-12), and G^bm⁷ (measure 13).

B

Section B consists of seven measures of music in 7/4 time. The notation includes eighth and sixteenth notes, with triplet markings. Chord symbols are placed above the staff: B^bm¹³ (measures 14-15), B^bm¹³ (measures 16-17), C^bdim⁷/C (measure 18), Aaug⁷/D (measures 19-20). Measure 20 ends with a double bar line.

2

22 $E^b m^7$ $F m^7$

24 $G m^7$ $E^b m^7$

Solos

27 $E^b m^{13}$ $F m^{13}$ $G^b m^7$

31 $F m^7$ $G^b m^7$ $A^b m^7$ $B^b m^7$ $B^b m^7$ $C m^7$

34 $B^b m^{13}$ $C^b dim^7 / C$ $A aug^7 / D$

Transiton Korvai

40

Lead Out

43 $E^b m^{13}$ $E^b m^{13}$

45 $F m^{13}$ $G^b m^7$

47 $F m^7$ $G^b m^7$ $G^b m^7$

50 $B^b m^{13}$ $B^b m^{13}$

52 $B^{\flat}m^{13}$ $B^{\flat}m^{13}$

54 $C^{\flat}dim7/$ $Aaug7/$
 C D

56

58 *Ending Korvai*

60

62

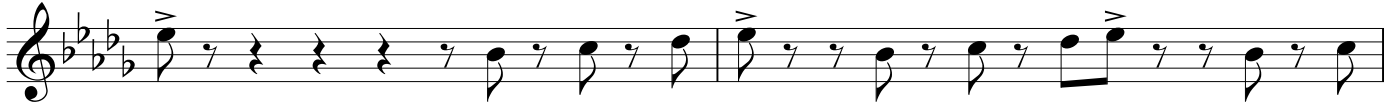
64

66

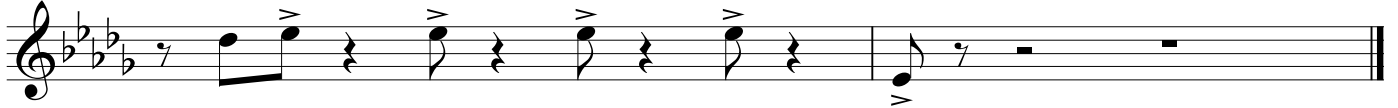
68

70

72

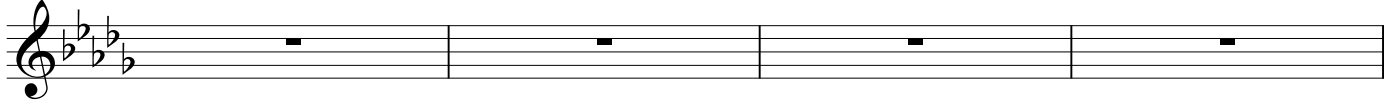


74



Head In: AAA'B...Solos:AAB + Transition KorvaiHead Out: AB + Final Koravi

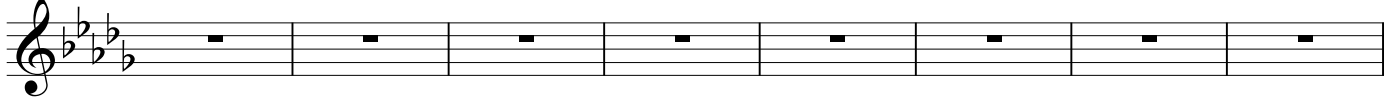
76



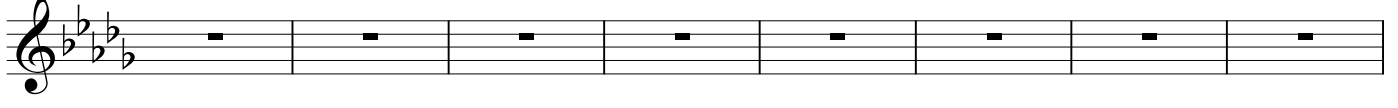
80



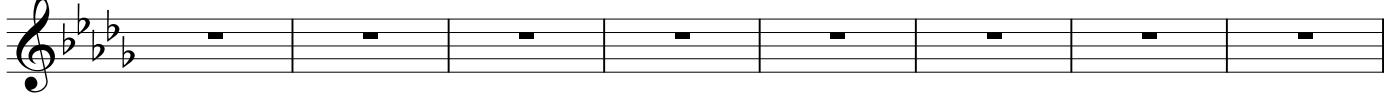
82



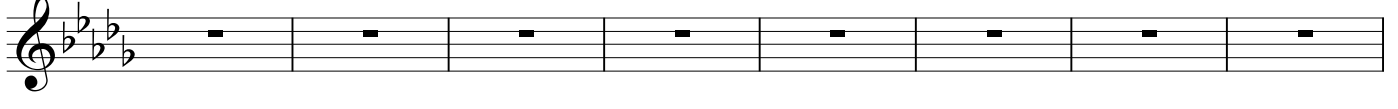
90



98



106



114

